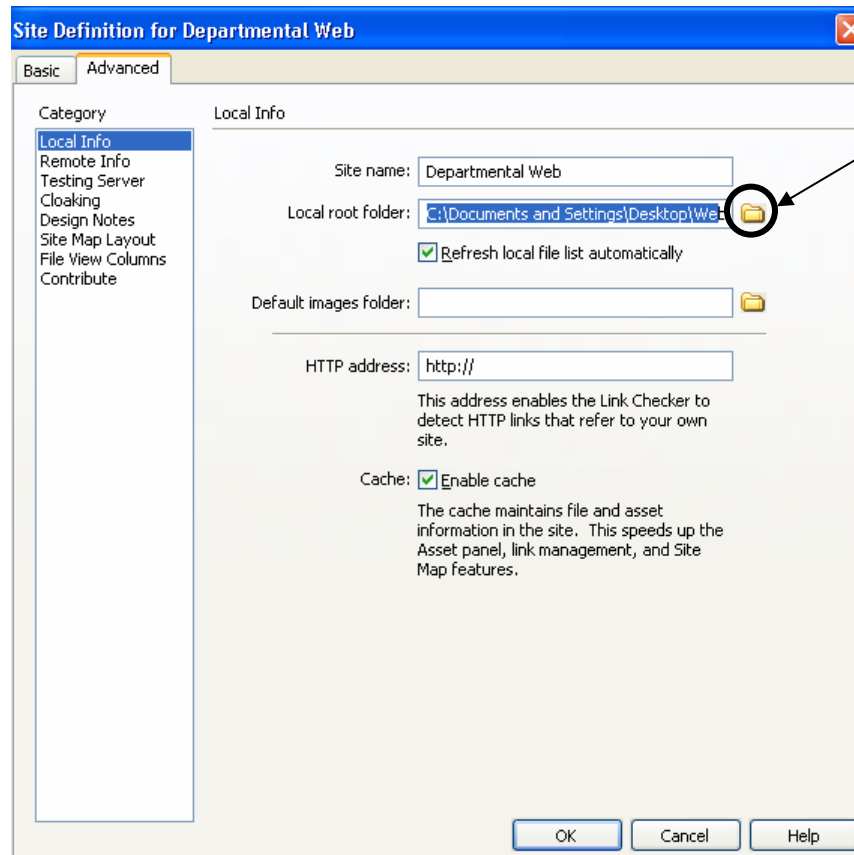
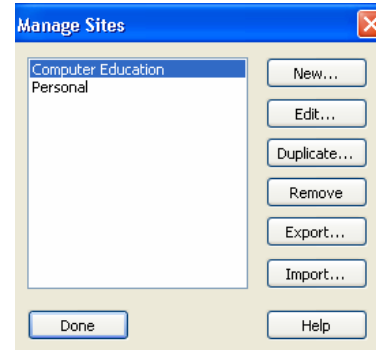


Defining a Local Site in Dreamweaver

1. Choose **Site > Manage Sites**. The Manage Sites window will open.
2. Choose **New > Site**. The Site Definition window will open.
3. Choose the **Advanced** tab.
4. Make sure **Local Info** is selected under Category.
5. For **Site name** type web site a name. This is for your reference. You may want to use something like Department Web or Personal.
6. For **Local root folder** select the **Folder** button and browse to select the folder where you have saved your web files. Once you locate the folder, choose the **Select** button.



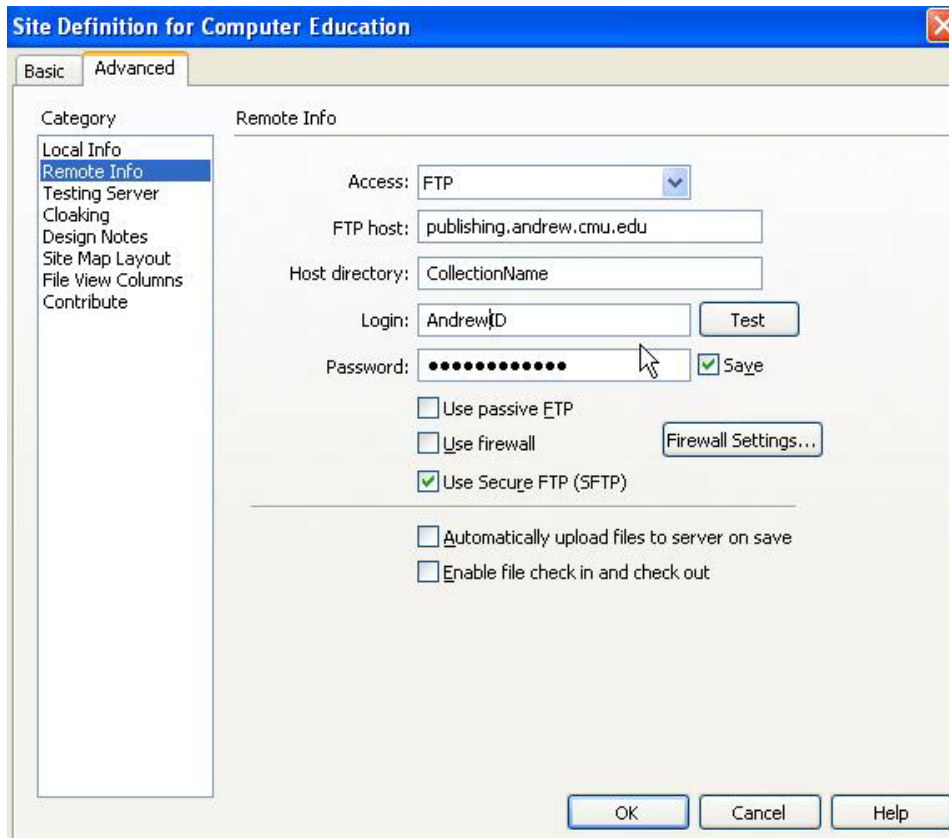
Defining a Remote Site in Dreamweaver

After you define a local site in Dreamweaver, you can define the remote. The remote site is where you copy the pages once complete. In this example, we will define a remote site for use with the Andrew Web Publishing System (AWPS).

1. In the Category list on the left, select **Remote Info**.
2. From the **Access** pop-up menu, select **FTP**.
3. Enter the following information:

FTP Host: **publishing.andrew.cmu.edu**
Host Directory: **your Collection Name**
Login: **your Andrew userid**
Password: **your Andrew password**

Note: Make sure to select the Use Secure FTP (SFTP) check box.



4. Select the **OK** button, then **Done**. Your web files will appear in the **Files** panel.

Note: Once your site is defined, switch to Local view. Local view is where you edit your web pages. To view your local files select the **Files** panel and choose **Local** view from the drop-down menu.

